



SHINING 3D®

# EINSTAR

3D Scanner

Go Ahead With **Einstar**





Shop Now Online:  
[www.einstar.com](http://www.einstar.com)



---

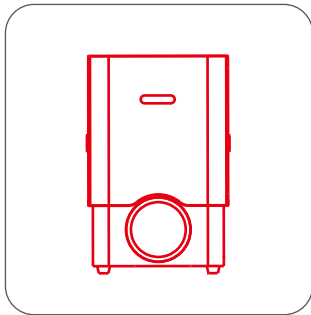
Our mission at SHINING 3D is to make 3D technology accessible to everybody. EINSTAR is our most affordable 3D scanner ever! You can digitize the world around you like never before!

Einstar can easily capture stable and clear details at a fast pace with high quality data outputs. Start 3D scanning at ease today with **EINSTAR**

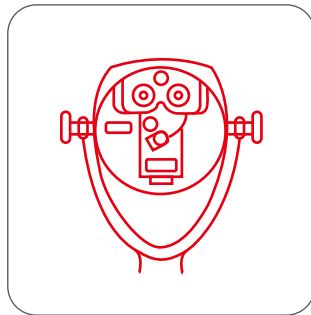


## Variety Applications

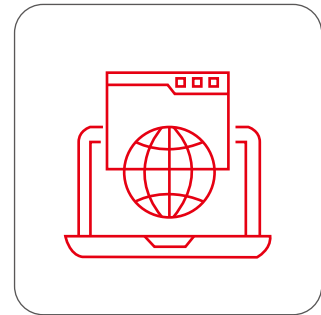
Support multiple data format outputs, compatible with 3D printers and 3D design softwares.



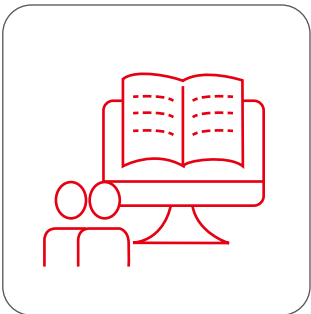
3D Printing



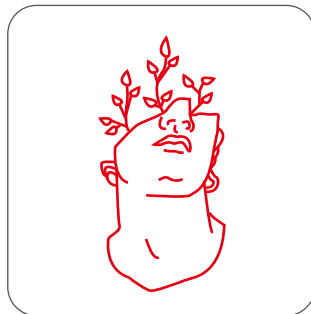
Designing



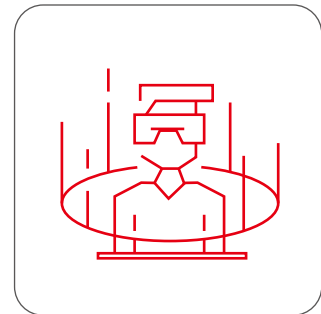
Digital Archiving



Education



Culture and Art



VR&AR



## High Quality Data

Collect high density point cloud data fast and easily with point distance up to 0.1mm.

35cm



12.5cm





## High Color Fidelity

Benefit from built-in RGB color camera.  
3D data with authentic colors.



3D Data  
Scanned with Einstar



Physical Object

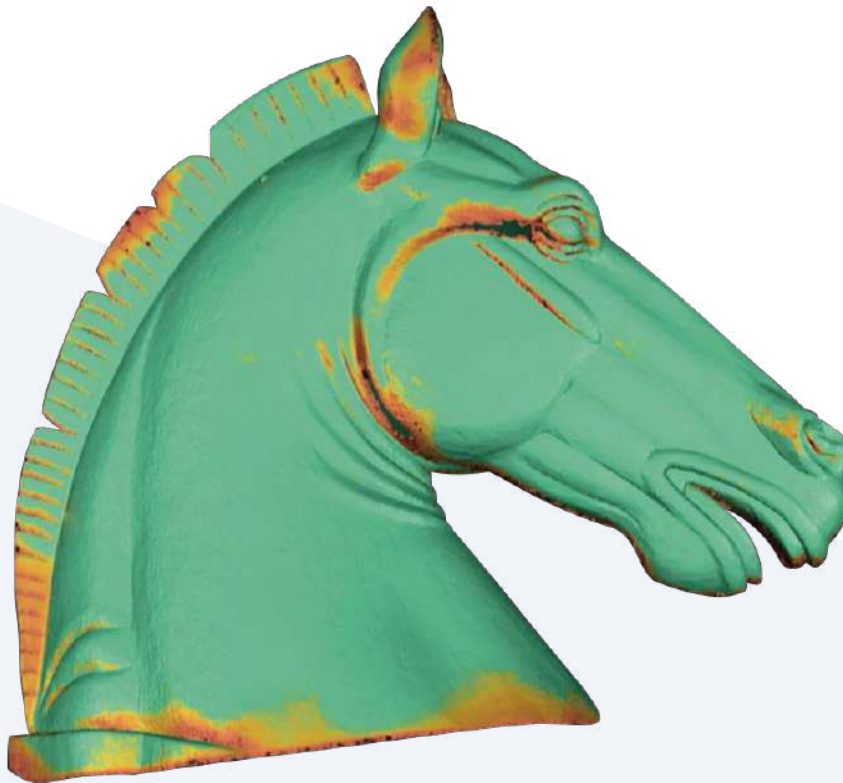


3D Data Scanned with Einstar



# Detail-oriented Enhancement Technology

Built-in detail enhancement technology optimizes the point cloud for complete data acquisition.



## Data Quality Indicator:

Turn on to better guide the scanning and improve the data quality.





## Streamlined User Experience

Smooth and fast, scanning speed up to 14 FPS.

- Smart tracking performance
- Automatic alignment
- Intelligent algorithm

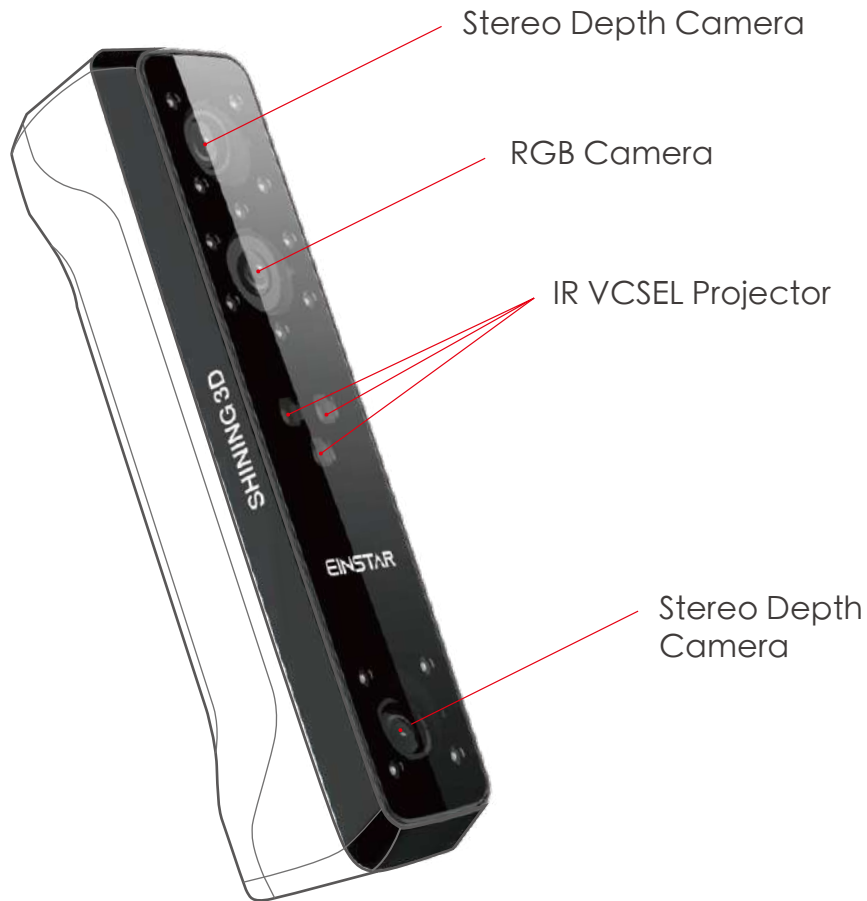




## Stable Outdoor Scanning

Equipped with 3 Infrared VCSEL Projectors, 2 Stereo Depth Cameras and 1 RGB Camera, Einstar can capture clear scan data and generate stable outputs outdoors.

Provide a flexible working distance for small and large objects.







SPRINK 3D

SPRINK 3D



## Extremely Easy to Use

- Ergonomic design
- Only one USB cable for data transmission and power
- Clear and elegant workflow for scanning and post processing
- Easy to setup, plug and play



Friendly User Interface



Single USB cable,  
easy to operate



## Comfortable for Eyes, Easy to Scan Hair

- No projector light during scanning process.
- Comfortable and safe for eyes.
- Turning on "Hair Mode" to get sufficient hair data for human scan and improve the whole data completeness.



# TECHNICAL SPECIFICATIONS

## EINSTAR

Light Source	Infrared VCSEL structured light*
Point Distance	0.1 mm ~ 3 mm
Effective Working Distance	160 mm ~ 1400 mm
Optimal Working Distance	400 mm
FOV (under optimal work distance)	434 mm x 379 mm
Scan Rate	Up to 14 fps
Data Alignment Mode	Texture/ Feature/ Hybrid Alignment/ Global Markers*
Full Color Scanning	Yes
Outdoor Scanning	Yes
Output Formats	OBJ, STL, PLY, ASC, 3MF, P3
Scanner Weight	0.5 kg
Scanner Dimensions	220 mm x 46 mm x 55 mm
Carrying Case Dimensions	245 mm x 245 mm x 90 mm
Interface	USB 2.0 or above
Supported OS	Windows 10/11 64-bit

\*Einstar infrared light source, certificated as Class 1 laser product, is safe under all conditions of normal use.

\*Global Markers alignment is only available in Object Scan Mode



@einstar3d

Einstar-EN 20220914-V1.2



[www.shining3d.com](http://www.shining3d.com)

[www.einstar.com](http://www.einstar.com)

[einstar\\_support@shining3d.com](mailto:einstar_support@shining3d.com)