



Industrial 3D Printing, Affordable Prices

FUNMAT

Industrial Quality Desktop 3D Printer



Insulated Chamber

Able to print standard filaments without warping and cracking issues



Filament Absent Warning

When filament is soon to run out, system releases an alarm



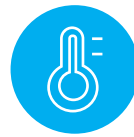
Built-in Camera

Monitor the print remotely from mobile through APP

Model	FUNMAT
Printing Technology	Fused Filament Fabrication (FFF)
Build Volume	260*260*260mm
Build Platform	Aluminum Plate + High Borosilicate Glass
Layer Thickness	0.05-0.3mm
Print Speed	30-300mm/s
Extruder Temperature	280°C/536°F
Platform Temperature	120°C/248°F
Chamber Temperature	--
Input File Type	STL, OBJ
Material	PLA, ABS, Nylon(PA), Carbon Fiber, TPU, Polywood
Filament Diameter	1.75mm
Position Accuracy	X/Y: 12.5µm Z: 1.25µm

FUNMAT HT

High Performance Functional Material 3D Printer



Heated Chamber

Can print functional materials like PEEK, PC, ULTEM without any issues



High Temperature Nozzle

High temperature all metal hotend that can heat upto 450°C



Functional Material Capability

Able to print PEEK, PC, UTLEM (PEI) and many more functional materials

Model	FUNMAT HT
Printing Technology	Fused Filament Fabrication (FFF)
Build Volume	260*260*260mm
Build Platform	Aluminum Plate + High Borosilicate Glass
Layer Thickness	0.05-0.3mm
Print Speed	30-300mm/s
Extruder Temperature	450°C/842°F
Platform Temperature	160°C/320°F
Chamber Temperature	90°C/194°F
Input File Type	STL, OBJ
Material	PEEK, ULTEM, PLA, ABS, Nylon (PA), Carbon Fiber, TPU, PC
Filament Diameter	1.75mm
Position Accuracy	X/Y: 12.5µm Z: 1.25µm

FUNMAT PRO

High Build Volume Industrial 3D Printer



High Build Volume

High build volume of 450*450*600 mm for industrial applications



Heated Build Plate

To avoid prints warpage. Build plate also has assisted leveling mechanism



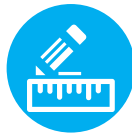
Industrial-Grade Configuration

Industrial grade components for high precision and high quality prints

Model	FUNMAT PRO
Printing Technology	Fused Filament Fabrication (FFF)
Build Volume	450*450*600mm
Build Platform	Aluminum Plate + High Borosilicate Glass
Layer Thickness	0.05-0.3mm
Print Speed	30-300mm/s
Extruder Temperature	280°C/536°F
Platform Temperature	120°C/248°F
Chamber Temperature	60°C/140°F
Input File Type	STL, OBJ
Material	PLA, ABS, Nylon(PA), Carbon Fiber, TPU, Polywood
Filament Diameter	1.75mm
Position Accuracy	X/Y: 18.75um Z: 1.56um

FUNMAT PRO HT

High Build Volume Technical Material 3D Printer



High Build Volume 3D Printer

High build volume up to 450x450x600 mm for industrial applications



Heated Chamber

To avoid warping & cracking issues esp. for functional material 3D Printing



High Temperature Metal Nozzle





High temperature all metal hotend that can heat up to 450 °C

Model	FUNMAT PRO HT
Printing Technology	Fused Filament Fabrication (FFF)
Build Volume	450*450*600mm
Build Platform	Aluminum Plate + High Borosilicate Glass
Layer Thickness	0.05-0.3mm
Print Speed	30-300mm/s
Extruder Temperature	450°C/842°F
Platform Temperature	160°C/320°F
Chamber Temperature	100°C/212°F
Input File Type	STL, OBJ
Material	PEEK, ULTEM, PLA, ABS, Nylon (PA), Carbon Fiber, TPU, PC
Filament Diameter	1.75mm
Position Accuracy	X/Y: 18.75um Z: 1.56um

Product Comparison

	FUNMAT	FUNMAT HT	FUMAT PRO	FUNMAT PRO HT
Build Volume	260*260*260 mm	260*260*260 mm	450*450*600 mm	450*450*600 mm
Extruder Temp.	280°C/536°F	450°C/842°F	280°C/536°F	450°C/842°F
Build Plate Temp.	120°C/248°F	160°C/320°F	120°C/248°F	160°C/320°F
Chamber Temp.	--	90°C/194°F	60°C/140°F	100°C/212°F
Nozzles	Single	Single	Single	Single
Nozzle Diameter	0.4mm	0.4mm	0.4mm	0.4mm
Filament Diameter	1.75mm	1.75mm	1.75mm	1.75mm
Supported Filaments	PLA, ABS, Nylon, Carbon Fiber, TPU, Polywood	PEEK, ULTEM, PLA, ABS, Nylon, Carbon Fiber, TPU, PC	PLA, ABS, Nylon, Carbon Fiber, TPU, Polywood	PEEK, ULTEM, PC, Carbon Fiber, PLA, ABS, Nylon, TPU

Product Matrix

	Standard Build Volume	High Build Volume
Standard Materials	 FUNMAT	 FUNMAT PRO
High Performance Materials	 FUNMAT HT	 FUNMAT PRO HT

INTAMSYS Filaments

Optimized For Our Machines

To create the perfect quality prints, we worked closely with filament manufacturers to come up with the best formulations well suited for our industrial quality machines. We also offer certain third party filaments that we thoroughly tested on our machines for quality. We can guarantee that these third party filaments shall also deliver exceptional quality on our 3D Printers.



Customized For INTAMSYS

Filaments are customized to deliver high quality prints with our 3D Printers



Extremely Tough

Filaments are made extremely tough to suit the varied customer needs



Uncompromised Quality

Stringent quality control process to deliver best quality output.



INTAMSYS Slicing Software

Slicing Engine For INTAMSYS Machines

We offer our in-house developed slicing software based on industry standard CURA slicing software. INTAMSUITE has various parameters and settings customized for INTAMSYS machines. Profiles of various INTAMSYS machines are pre-configured in the software.



Seamless Connection

INTAM-Suite provides seamless connection with INTAMSYS 3D Printers.



Pre-Configured

Our machine profiles are pre-configured in the software for easy operability



Compatible With CURA, Simplify3D

INTAM-Suite is compatible with Cura, simplify3D



24x7 Customer Support

Excellent Technical Support

Unlike various other electronic items like computers, 3D Printers require a detail level of maintenance and support to delivery high quality prints. At INTAMSYS, we understand this important need of our customers and set-up industry's first 24X7 technical support channel to help our customers on real time basis.



Real Time Support

We offer industry's first 24x7 technical support. You can send us email anytime and expect immediate response



Technical Documentation

We offer detailed troubleshooting guides and technical documentation on our website for easy reference



Community Forums

We have an active community forum driven by our customers and a team of experts from the company



INTAMSYS

SHANGHAI INTAMSYS TECHNOLOGY CO. LTD.

 www.intamsys.com

 021-5846 5932

 info@intamsys.com

 021-5846 3623

 3rd Floor, Building C9, No. 3188 Xiupu Road, Pudong New District, Shanghai, P.R.China 201315