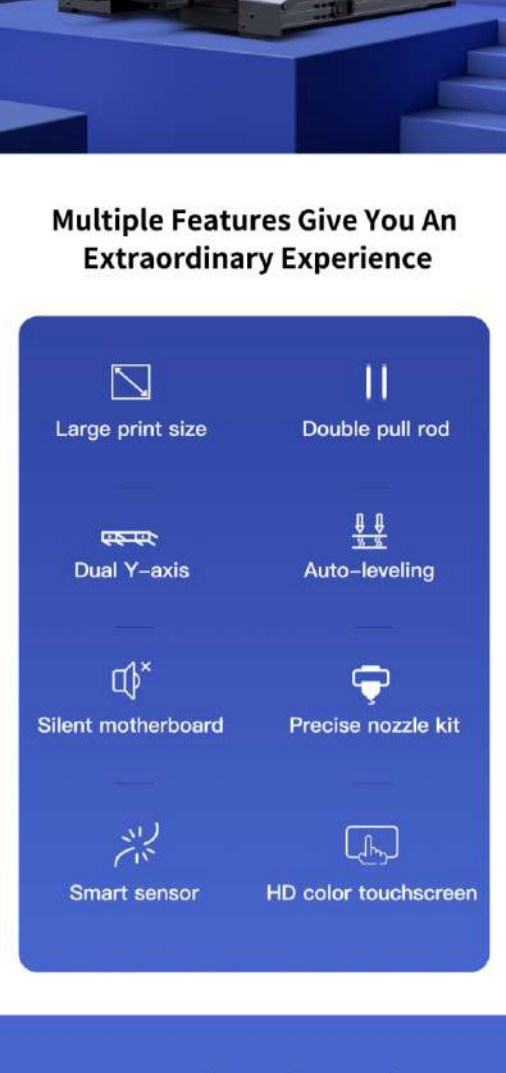


CR-6 Max

Intelligent Technology Meets Your Infinite Creativity

Large print size | High print precision
Smart auto-leveling



Multiple Features Give You An Extraordinary Experience



Large print size



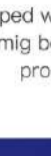
Double pull rod



Dual Y-axis



Auto-leveling



Silent motherboard



Precise nozzle kit



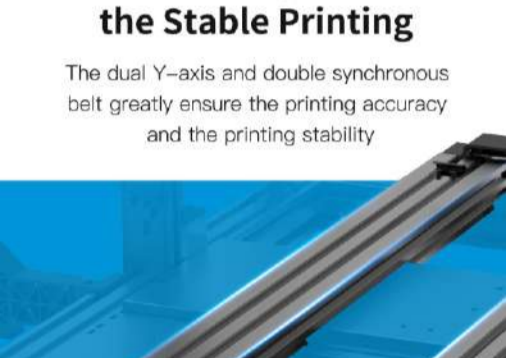
Smart sensor



HD color touchscreen

Larger Print Size Makes You Enjoy the DIY Fun

With the print size 400*400*400, CR-6 Max realizes your unlimited creativity and satisfies you with more choices



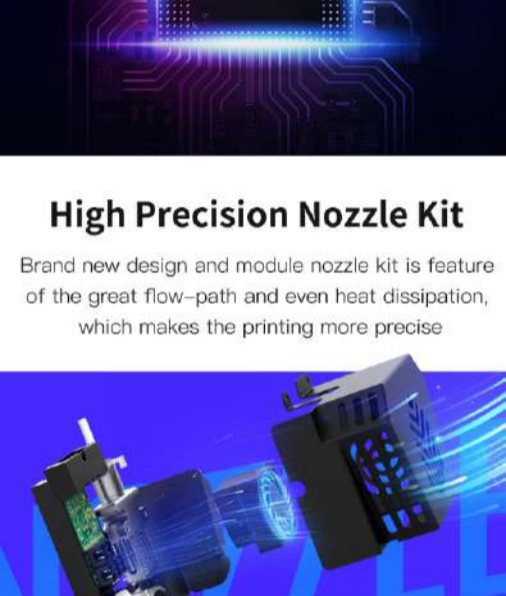
Double Pull Rod + Dual Z-axis

Equipped with a double-pull rod, dual Z-axis and timig belt, the triangular structure greatly promotes the printing stability



Dual Y-axis Design Promotes the Stable Printing

The dual Y-axis and double synchronous belt greatly ensure the printing accuracy and the printing stability



Intelligent Auto-leveling

The brand new and self-developed leveling has the precise sense, more convenient and efficient



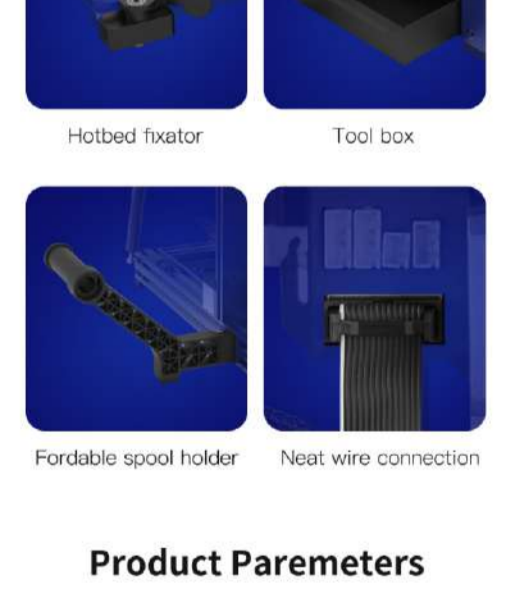
Excellent Silent Motherboard

The upgraded silent motherboard with excellent performance reduces the print noise



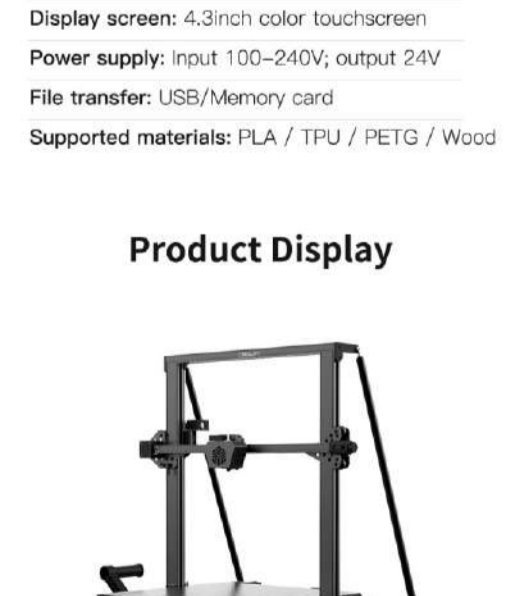
High Precision Nozzle Kit

Brand new design and module nozzle kit is feature of the great flow-path and even heat dissipation, which makes the printing more precise



Self-developed Extrusion Mechanism

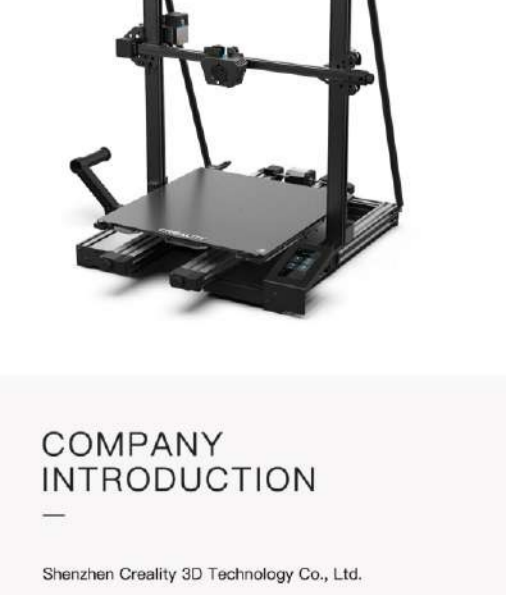
Brand new extrusion mechanism makes the filament feed-in much easier. The smooth feeding ensures the smooth printing



The Quality Is Always the First

Filament Sensor + Resume Printing

Avoid the printing failure owing to the filament breakage and power outage, save time and energy



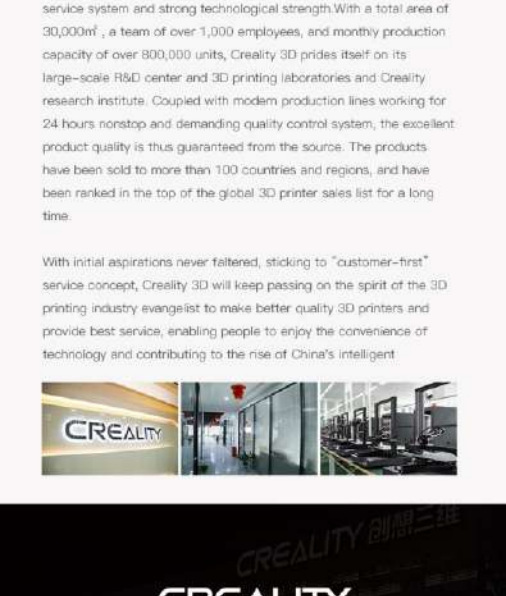
HD Color Touchscreen

4.3inch HD idisplay with easy operation gives you a better experience



Carborundum Glass Platform

Fast to heat, easy to remove the model without warping



Optimized Details



Hotbed fixator



Tool box

Fordable spool holder

Neat wire connection

Product Paremeters

- Molding technology: FDM
- Print size: 400*400*400mm
- Machine size: 725*640*691mm
- Printing resolution: ± 0.1mm
- Layer thickness: 0.1-0.4mm
- Number of nozzles: 1
- Nozzle diameter: 0.4mm as standard
- Nozzle temperature: ≤ 260 °C
- Hotbed temperature: ≤ 90 °C
- Rated power: 500W
- Display screen: 4.3inch color touchscreen
- Power supply: Input 100-240V; output 24V
- File transfer: USB/Memory card
- Supported materials: PLA / TPU / PETG / Wood

Product Display

COMPANY INTRODUCTION

Shenzhen Creality 3D Technology Co., Ltd.

Creality 3D is an internationally renowned 3D printer manufacturer, national high-tech enterprise, and a pioneer in the R&D and mass production of FDM and resin 3D printers in China. Our company has been committed to applying 3D printers into market, delivering efficient and cost-effective integrated 3D printing solutions for individuals, families, schools and enterprises.

Headquartered in Shenzhen, Creality 3D has branches in Beijing, Shanghai and Wuhan, and cooperates with colleges and universities to build an industry-university-research teaching and internship base. We have a complete set of R&D, manufacturing and after-sales service system and strong technological strength. With a total area of 30,000m², a team of over 1,000 employees, and monthly production capacity of over 800,000 units, Creality 3D prides itself on its large-scale R&D center and 3D printing laboratories and Creality research institute. Coupled with modern production lines working for 24 hours nonstop and demanding quality control system, the excellent product quality is thus guaranteed from the source. The products have been sold to more than 100 countries and regions, and have been ranked in the top of the global 3D printer sales list for a long time.

With initial aspirations never faded, sticking to "customer-first" service concept, Creality 3D will keep passing on the spirit of the 3D printing industry evangelist to make better quality 3D printers and provide best service, enabling people to enjoy the convenience of technology and contributing to the rise of China's intelligent

CREALITY
www.creality.com