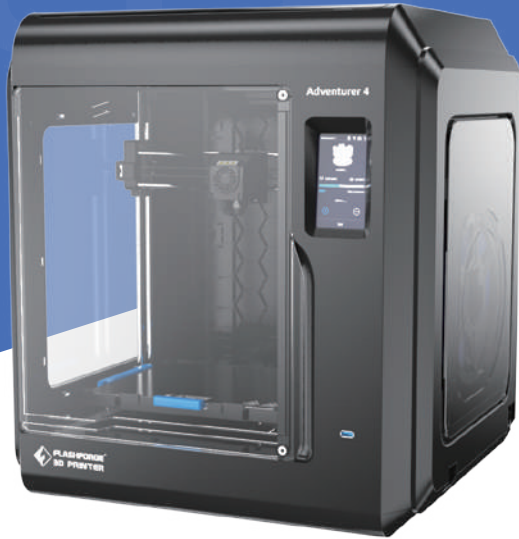




Adventurer 4 Series

Adventurer 4 / Adventurer 4 Lite

Exclusively Smart and Efficient 3D Printer



Adventurer 4 has real leveling-free design of platform and larger printing size, combining new slicer which could easily monitor and manage multiple 3D printers. To integrate interest, daily life and working efficiency with intelligent printing experience for family consumers, educators and office users. Speed up for a better life!



**Leveling-free
Platform**



**Detachable Nozzle Resistant
To 265°C Centigrade**



**Remove Models
Quickly**



**Multi-device Operation
Management**



**Various Filaments
Supported**



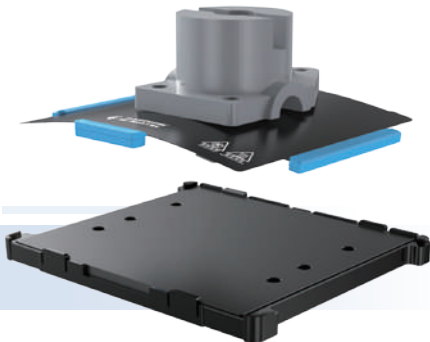
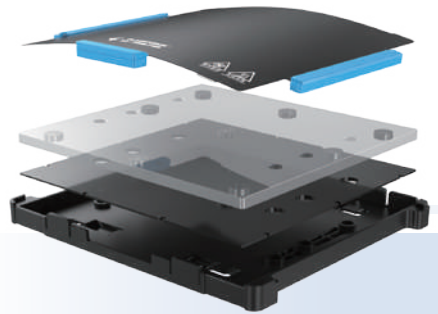
**HEPA 13
Filter**



High-efficiency & Plug-N-Play

Leveling Free Platform

Real auto-level platform: Applying CNC made bottom frame as mounting base level; 8 mm super-flat aluminum plate ensures the platform flatness difference to be less than 0.15 mm; excellent first-layer printing quality without the need to adjust.



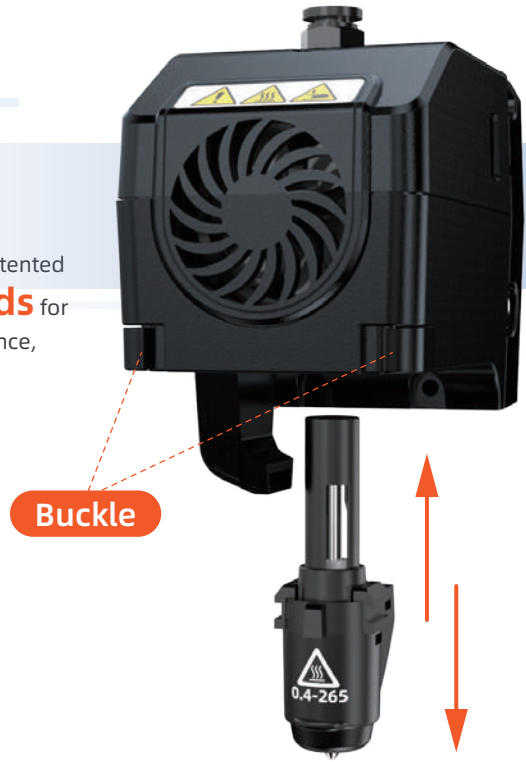
Remove Models Quickly

Magnetic adsorption platform, pliable double holders make it possible to take down models within **5 seconds**.

Note: adventurer 4 lite is equipped with a glass build plate

Removable Nozzle

Readily detachable nozzle with patented buckle design. Only **3 seconds** for easier replacement and maintenance, tool free.



60 seconds for heating up to 200 degree.

Wide Range of Application Coverage



- Larger printing size: 220*200*250mm
- Built-in 1kg filament spool holder
- Different nozzle choice: 0.3/0.4/0.6mm
High precision and timeliness can be guaranteed and chosen alternatively
- 240/265 degree nozzle
Match with various filaments:
PLA/PETG/ABS/PC/PLA-CF/PETG-CF
- Compatible with third-party filament



PLA-SE

Easy to print and good surface.



PLA-CF

Wonderful smooth surface and enhanced strength.



PLA-GALAXY MATTE BLACK

Easy to print and has Starry sky texture matte surface.



PC: High strength & High temperature resistant

PETG: High transparency & wonderful toughness.

Multi-function Escort

- Continue printing after recovery from power failure
- Detection sensor for lacking filament
- HD Built-in camera monitoring (Adventurer 4 only) & remote control for any emergency
- Remote printing control by Wi-Fi or Ethernet
- New Flashprint support multi-device on-line control, managing printers in high efficiency
- Energy-saving mode: only 1KWH power consumption when standby overnight

Flashprint could classify and top printing works; printing works are collected in alignment; management efficiency of multiple devices can be improved.

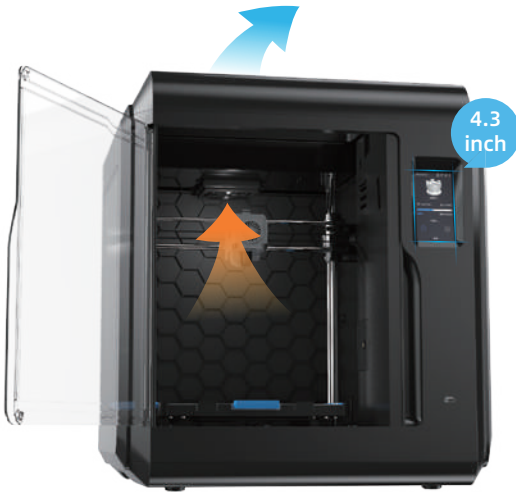


Friendly and Safe Operation

- HEPA 13 could filter 99% TVOC powder and active coal could filter printing emission (designed to silently remove nano-particles)



Note: applicable to education
(Adventurer 4 only)



45dB silent printing suitable for home and class use

4.3 inch high-sensitivity touchscreen to operate

Fully-enclosed housing to lower the possibility of injury caused by mechanical movement

Application Cases



Education

Applicable to K-12 education, 3D design and 3D printing teaching and training

Home Users

For hobbyist to print parts at home



Office

Designers, engineers could print parts to test the designed models

Small Business

Produce samples in small scale production



Specification

Name	Adventurer 4	Adventurer 4 Lite
Extruder Quantity	1	1
Printing Precision	±0.1 mm (test of 100mm cube)	±0.1 mm (test of 100mm cube)
Position Precision	X/Y axis: 0.011 mm; Z axis: 0.0025 mm	X/Y axis: 0.011 mm; Z axis: 0.0025 mm
Layer Thickness	0.1~0.4 mm	0.1~0.4 mm
Build Size	220 x 200 x 250 mm	220 x 200 x 250 mm
Nozzle Diameter	0.4mm (default) 0.6/0.3 mm (optional)	0.4mm (default) 0.6/0.3 mm (optional)
Printing Speed	10~150mm/s	10~150mm/s
Highest Extruder Temperature	265°C/240°C	240°C (265°C is optional)
Filament Type	ABS/PLA/PC/PETG/PLA-CF/PETG-CF	ABS/PLA(according to the nozzle)
Power Supply	AC100-240V/DC 24V/13.3A, 320W	AC100-240V/DC 24V/13.3A, 320W
Device Size	500 (L) *470 (W) *540 (H) mm	500 (L) *470 (W) *540 (H) mm
Packaging Size	580 (L) *570 (W) *630 (H) mm	580 (L) *570 (W) *630 (H) mm
Slicing Software	FlashPrint	FlashPrint
Input/Output File Type	Input: 3MF/STL/OBJ/FPP/BMP/PNG/ JPG/JPEG File; Output: GX/G File	Input: 3MF/STL/OBJ/FPP/BMP/PNG/ JPG/JPEG File; Output: GX/G File
Printing Connectivity	USB Disk/ WIFI/ Ethernet	USB Disk/ WIFI
Certification	CE / FCC / RoHS	CE / FCC / RoHS

Name	Adventurer 4	Adventurer 4 Lite
Working Environment	15-30°C	15-30°C
Compatible Operating System	Win XP/Vista/7/8/10、Mac OS、Linux	Win XP/Vista/7/8/10、Mac OS、Linux
Compatible Slicing Software	FlashPrint;	FlashPrint;
	Cura, Slic3r (need setting)	Cura, Slic3r (need setting)
Max. Bed Heating Temperature	110°C	110°C
Auxiliary Leveling	Leveling free	Leveling free
Filament Running Out Reminding	√	√
Continue Last Printing When Power Off	√	√
Touch LCD Screen	4.3 inch	4.3 inch
Remote Camera Watching	√	×
Air Filter Net	HEPA 13	×
Magnetic Printing Bed	√	×
Glass Printing Bed	×	√
Cloud Printing	√	√



Follow us

Zhejiang Flashforge 3D Technology Co., Ltd.

Address: No.518 XianYuan Road, Jinhua City, Zhejiang Province, China

Service Hotline: +86 579 82273989

support@flashforge.com